



Department of National Planning and Monitoring

THE MEDIUM TERM DEVELOPMENT PLAN IV 2023-2027

National Prosperity through Growing the Economy

Michael Kumung
Deputy Secretary – Policy and Planning



Presentation at 2024 PRIVATE GAVAMANI KONEKT – 1,
13th February 2024



MTDP IV 2023-2027 KEY OBJECTIVES

1

Grow a K200b Economy by 2030

2

Create 1 million jobs by 2027

3

Improve the quality of lives of all citizens

MTDP IV 2023-2027

MTDP IV OBJECTIVES

- i. Achieve a K200 billion economy by 2030
- ii. To create 1 million jobs by 2027
- iii. Improve the quality of lives of all citizens

12 Strategic Priority Areas (SPAs)

71 Deliberate Intervention Programs (DIPs)

MTDP IV STRATEGIC PRIORITY AREAS AND DELIBERATE INTERVENTION PROGRAMS

**SPA
01**

Strategic Economic Investment

- DIP 1.1: Commercial Agriculture & Livestock Development
- DIP 1.2: Mining & Petroleum Development
- DIP 1.3: Fisheries & Marine Resources
- DIP 1.4: Forestry
- DIP 1.5: Banking & Finance
- DIP 1.6: Micro, Small Medium Enterprise
- DIP 1.7: National Tourism, Arts & Culture Development
- DIP 1.8: Trade & Investment
- DIP 1.9: Manufacturing
- DIP 1.10: Land Development

**SPA
02**

Connect PNG Infrastructure

- DIP 2.1: Connect PNG - Road Transport
- DIP 2.2: Connect PNG - Water/Sea Transport
- DIP 2.3: Connect PNG - Air Transport
- DIP 2.4: Connect PNG—Telecommunication & ICT Connectivity
- DIP 2.5: Connect PNG - Electrification Rollout
- DIP 2.6: Connect PNG - WaSH
- DIP 2.7: Connect PNG - Housing
- DIP 2.8: Connect PNG—Urban Town District Growth Centres

**SPA
03**

Quality & Affordable Health Care

- DIP 3.1: Primary Health Care
- DIP 3.2: Specialized Health Care
- DIP 3.3: Health Infrastructure
- DIP 3.4: Specialized Training & Accreditation
- DIP 3.5: HIV-AIDS

**SPA
04**

Quality Education & Skilled Human Capital

- DIP 4.1: Early Childhood Education
- DIP 4.2: Quality Basic Primary & Secondary Education
- DIP 4.3: Tertiary Education
- DIP 4.4: Technical Vocational Education & Training
- DIP 4.5: Quality Training & Accreditation

**SPA
05**

Rule of Law & Justice

- DIP 5.1: National Policing & Crime Prevention
- DIP 5.2: Effective Judiciary System
- DIP 5.3: Correctional Services Rehabilitation & Reintegration
- DIP 5.4: Community Peace & Restorative Justice

**SPA
06**

National Security

- DIP 6.1: National Defence & Cooperation
- DIP 6.2: Immigration
- DIP 6.3: Cyber Security
- DIP 6.4: Biosecurity
- DIP 6.5: National Business Protection
- DIP 6.6: National Intelligence

**SPA
07**

National Revenue & Public Finance Management

- DIP 7.1: Tax Revenue Administration
- DIP 7.2: Customs Administration
- DIP 7.3: Non-Tax Revenue Administration
- DIP 7.4: Public Finance Management
- DIP 7.5: Payroll Administration

**SPA
08**

Digital Government, National Statistics & Public Service Governance

- DIP 8.1: Integrated Digital Government System
- DIP 8.2: National Statistical System
- DIP 8.3: National Identification Registration
- DIP 8.4: Electronic Electoral System
- DIP 8.5: Censorship
- DIP 8.6: Public Service Administration
- DIP 8.7: Public Service Governance
- DIP 8.8: Central Agencies Coordination

**SPA
09**

Research, Science & Technology

- DIP 9.1: Medical Research
- DIP 9.2: Environment & Bio-Science Research
- DIP 9.3: Agriculture Research
- DIP 9.4: Engineering & Technology Research
- DIP 9.5: Socio-Economic Policy Research
- DIP 9.6: Food Security

**SPA
10**

Climate Change & Environment Protection

- DIP 10.1: Climate Change Mitigation and Adaptation
- DIP 10.2: Environment Protection
- DIP 10.3: National Disaster Management

**SPA
11**

Population, Youth & Gender Development

- DIP 11.1: Sustainable Population
- DIP 11.2: Youth Development & Labour Mobility
- DIP 11.3: Sports Development
- DIP 11.4: Gender
- DIP 11.5: Family & Social Protection

**SPA
12**

Strategic Partnerships

- DIP 12.1: Foreign Relations
- DIP 12.2: Development & Economic Cooperation
- DIP 12.3: Private Sector
- DIP 12.4: Civil Society & Churches
- DIP 12.5: National Volunteer Services



Economic Growth Assumptions to grow a K200 Billion Economy by 2030

GOVERNMENT BUDGET

BY 2027, INCREASE TOTAL EXPENDITURE TO:

K30.0 B

BASELINE (2023)
K24.7 B

CAPITAL INVESTMENT BUDGET

BY 2027, EXPEND UP TO:

K51.0 B

BASELINE (2023)
K9.7 B ANNUALLY

EXPORT REVENUE

BY 2027, INCREASE EXPORT REVENUE TO:

K50.0 B

BASELINE (2021)
K37.3 B

CRITICAL INFRASTRUCTURE

BY 2027, CONNECT PNG INFRASTRUCTURE INVESTMENTS ARE:

K17.8 B

BASELINE (2023)
K2.5 B

INTERNAL REVENUE

BY 2027, INCREASE INTERNAL REVENUE TO:

K25.0 B

BASELINE (2021)
K15.6 B

IMPORTS

BY 2027, REDUCE IMPORTS BY:

K5.0 B

BASELINE (2021)
K11.9 B

LAW & ORDER, NATIONAL SECURITY

BY 2027, TOTAL INVESTMENTS AMOUNT TO:

K3.4 B

BASELINE (2023)
K0.4 B

SPA 12

Strategic Partnership

DIP 12.3: Private Sector

Proactively engage with Private Sector to identify opportunities to:

- a) Ease of Doing Business in the country
- b) Development of PPP Initiatives
- c) Tax Credit Scheme
- d) Private/Corporate Sector Community Service Obligations
- e) Outsourcing of certain Govt functions to Private Sector

Aimed at forging strong Private Sector Partnerships for greater development results





Sources of Financing the Implementation of MTDP IV

- 1 GoPNG Public Investment Program (PIP)
- 2 GoPNG PSIP and DSIP
- 3 Concessional Loans and Commercial Loans
- 4 Grant Financing
- 5 Infrastructure Tax Credit Scheme (ITCS)
- 6 Public Private Partnerships (PPP)
- 7 Civil Society Organisations (NGOs, FBOs, Philanthropies)
- 8 Private Sector (CSO)
- 9 Foreign Direct Investments

SPA 01 Strategic Economic Investments

SPA 02 Connect PNG Infrastructure

SPA 03 Quality & Affordable Health

SPA 04 Quality Education & Skilled Human Capital

SPA 05 Rule of Law & Justice

SPA 06 National Security

SPA 07 National Revenue & PFM

SPA 08 Digital Government, National Statistics & Public Service Governance

SPA 09 Research, Science & Technology

SPA 10 Climate Change & Environment Protection

SPA 11 Population, Youth & Gender Development

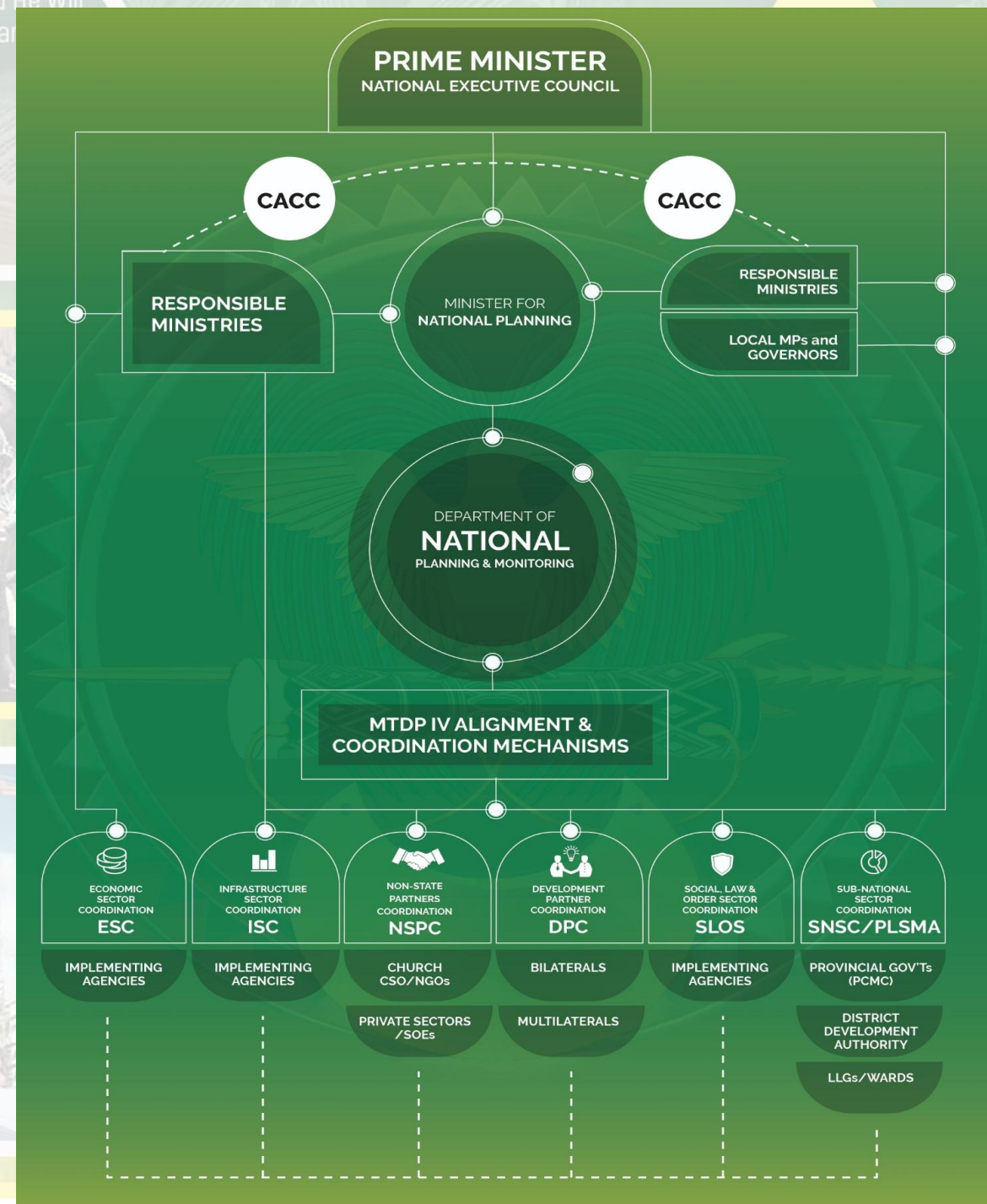
SPA 12 Strategic Partnerships



IMPLEMENTATION GOVERNANCE STRUCTURE

PURPOSE

1. To coordinate all stakeholders by sectors
2. For sectors to report against sector targets and indicators consistently
3. For sectors to take a proactive approach to measure performance and report on MTDP IV





PAPUA NEW GUINEA
MEDIUM TERM DEVELOPMENT PLAN IV
| 2023 - 2027 |



"Commit to the Lord whatever you do and He will establish your plans"
PROVERBS 16:3

National Prosperity
through Innovation and Structural
Transformation

THANK YOU

WOK BAI TOK

GAU KARA DO IA HEREVA